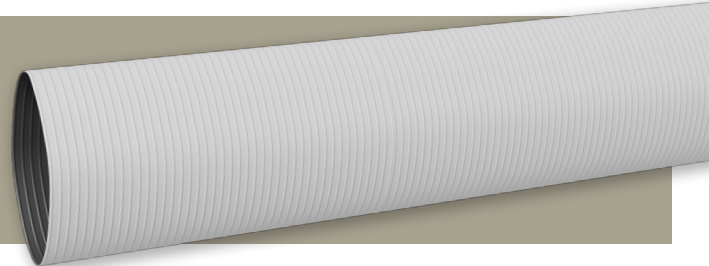






Single Jacket Mill Hose



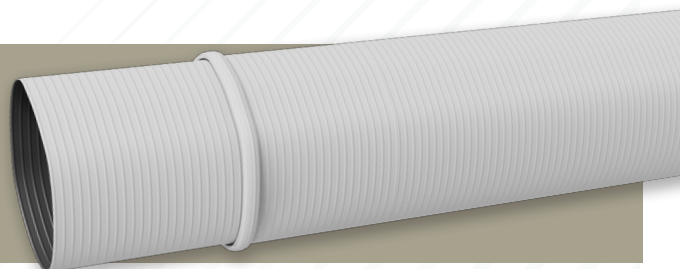
Heavy duty lay-flat hose with thicker outer jacket - extra thick cover, ideal for rugged and tough conditions. Excellent abrasion and puncture resistance.

Applications: • WATER DISCHARGE • WASH DOWN

- ▶ **COVER:** Polyester Single Jacket
- ▶ **TEMPERATURE:** -22°F to 158°F
- ▶ **TUBE:** Natural Rubber Liner
- ▶ **SAFETY FACTOR:** 3:1

Part Number	 I.D.	 Length	 Working Pressure	 Lbs./Roll
AH-1.5-MILL-SJ	1-1/2"	100 FT	150 PSI	19.62 Lbs
AH-2-MILL-SJ	2"	100 FT	150 PSI	26.9 Lbs
AH-2.5-MILL-SJ	2-1/2"	100 FT	150 PSI	35.49 Lbs
AH-3-MILL-SJ	3"	100 FT	150 PSI	44.75 Lbs
AH-4-MILL-SJ	4"	100 FT	150 PSI	70.77 Lbs





Double Jacket Mill Hose



Heavy duty lay-flat hose with thicker double-outer jacket. Extra outer jacket providing higher abrasion, puncture and cut resistance. Ideal for rugged and tough conditions.

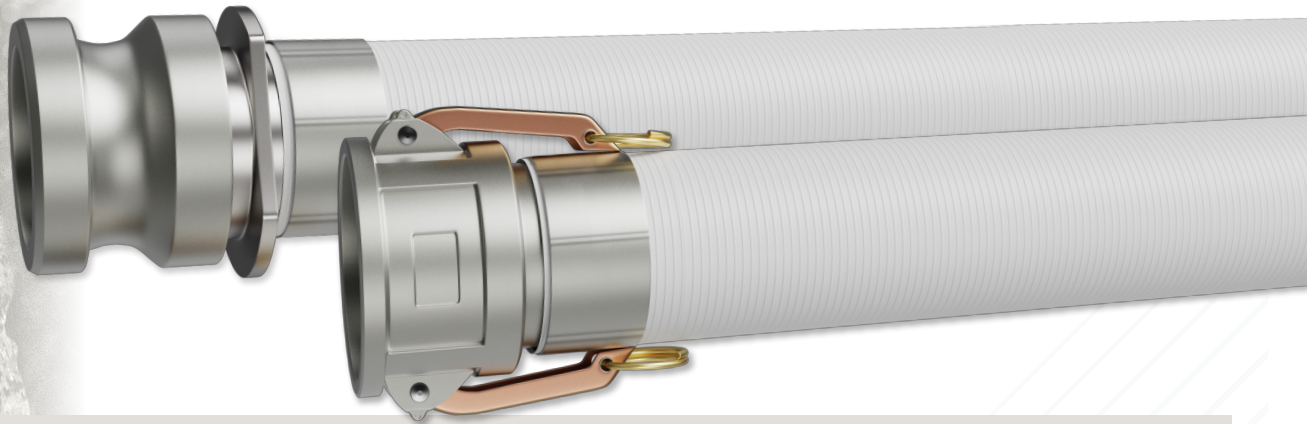
Applications: • WATER DISCHARGE • WASH DOWN

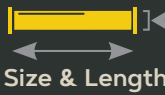


- ▶ **COVER:** Polyester Outer Jacket
- ▶ **TEMPERATURE:** -22°F to 158°F
- ▶ **INNER LINER:** Polyester Inner Jacket
- ▶ **SAFETY FACTOR:** 3:1
- ▶ **CORE:** Natural Rubber Liner

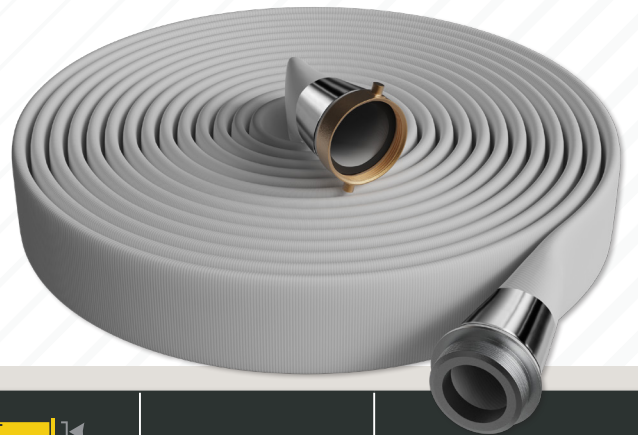
Part Number	 I.D.	 Length	 Working Pressure	 Lbs./Roll
AH-1.5-MILL-DJ	1-1/2"	100 FT	250 PSI	26.9 Lbs.
AH-2-MILL-DJ	2"	100 FT	250 PSI	36.82 Lbs.
AH-2.5-MILL-DJ	2-1/2"	100 FT	250 PSI	47.18 Lbs.
AH-3-MILL-DJ	3"	100 FT	250 PSI	58.42 Lbs.
AH-4-MILL-DJ	4"	100 FT	250 PSI	82.23 Lbs.


Single Jacket Mill Hose

POPULAR ASSEMBLIES



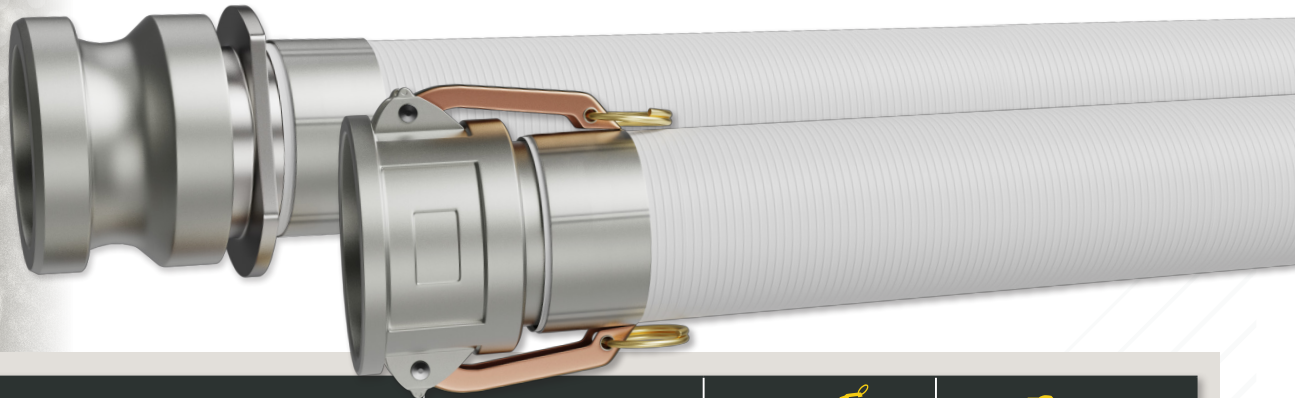
Part Number	 Size & Length	 Ends	 Attaching Method
PA-1.5-MILL-SJ-C-E-100FT	1-1/2" X 100 FT	CAMLOCKS	CRIMPED
PA-2-MILL-SJ-C-E-100FT	2" X 100 FT	CAMLOCKS	CRIMPED
PA-2.5-MILL-SJ-C-E-100FT	2-1/2" X 100 FT	CAMLOCKS	CRIMPED
PA-3-MILL-SJ-C-E-100FT	3" X 100 FT	CAMLOCKS	CRIMPED
PA-4-MILL-SJ-C-E-100FT	4" X 100 FT	CAMLOCKS	CRIMPED






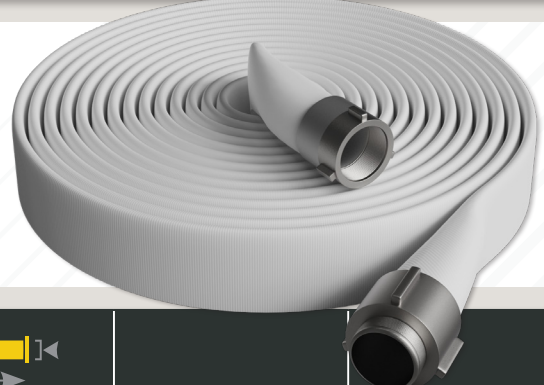
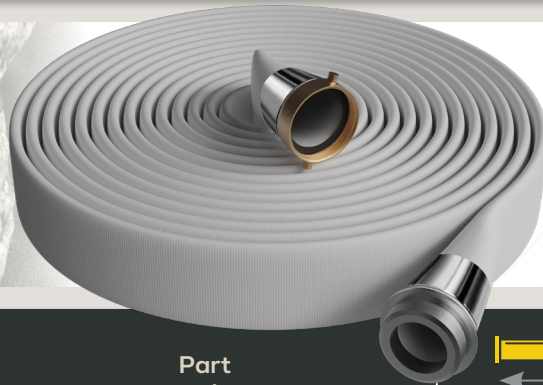
Part Number	 Size & Length	Ends	Attaching Method
PA-1.5-MILL-SJ-NPSH-50FT	1-1/2" X 50 FT	NPSH	EXPANDED
PA-2-MILL-SJ-NPSH-50FT	2" X 50 FT	NPSH	EXPANDED
PA-2.5-MILL-SJ-NPSH-50FT	2-1/2" X 50 FT	NPSH	EXPANDED
PA-3-MILL-SJ-NPSH-50FT	3" X 50 FT	NPSH	EXPANDED
PA-4-MILL-SJ-NPSH-50FT	4" X 50 FT	NPSH	EXPANDED


Double Jacket Mill Hose

POPULAR ASSEMBLIES



Part Number	 Size & Length	 Ends	 Attaching Method
PA-1.5-MILL-DJ-C-E-100FT	1-1/2" X 100 FT	CAMLOCKS	CRIMPED
PA-2-MILL-DJ-C-E-100FT	2" X 100 FT	CAMLOCKS	CRIMPED
PA-2.5-MILL-DJ-C-E-100FT	2-1/2" X 100 FT	CAMLOCKS	CRIMPED
PA-3-MILL-DJ-C-E-100FT	3" X 100 FT	CAMLOCKS	CRIMPED
PA-4-MILL-DJ-C-E-100FT	4" X 100 FT	CAMLOCKS	CRIMPED



Part Number	 Size & Length	Ends	Attaching Method
PA-1.5-MILL-DJ-NPSH-50FT	1-1/2" X 50 FT	NPSH	EXPANDED
PA-2-MILL-DJ-NPSH-50FT	2" X 50 FT	NPSH	EXPANDED
PA-2.5-MILL-DJ-NPSH-50FT	2-1/2" X 50 FT	NPSH	EXPANDED
PA-1.5-MILL-DJ-NST-50FT	1-1/2" X 50 FT	NST	EXPANDED
PA-2.5-MILL-DJ-NST-50FT	2-1/2" X 50 FT	NST	EXPANDED